

## TILE CARE

Tiles play an important role in setting the look and feel of the house. Tiles are used to create the desired ambience but can also be difficult to choose. Consulting an interior designer can be useful as they can provide good advice on making the correct selection. However the final decision must suite your comfort and liking.

Ceramic tiles are in vogue especially in modern houses, and are available in various colors and colour combinations. In addition to standard sizes, custom sizes can also be ordered to meet specific requirements. Ceramic tiles are versatile in application and can be used almost anywhere including walls, fireplaces, ceilings and floors. These tiles have a number of qualities that make them perfect for tiling almost in any part of the building. Delivering thermal, chemical, and mechanical characteristics, ceramic tiles are resistant to impact, force, stain and water absorption.

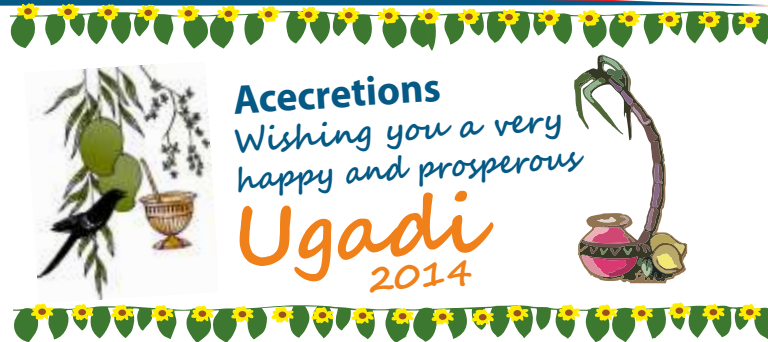
Ceramic tiles are especially recommended for bathrooms due to their innumerable advantages, and can be used innovatively. Non-porous and slip-resistant tiles are perfect for bathrooms with their functional benefits. From an aesthetic point of view, bathroom tile colour can help create a unique look.

The size of tiles should be decided according to the size of the area. A small area has to be fitted with small sized tiles; large tiles will look ridiculous and make the space appear smaller. Available in a wide choice of colour and size, tiles offer significant creative scope in design. While purchasing tiles, ordering a few extra tiles is advised so that there is no need to compromise. Tiles with deep colors and vibrant patterns can change the entire look of the house.

Based on the budget, market availability and accessibility a range of tiles including porcelain, ceramic and outdoor tiles can be chosen.

### What is a PEI rating?

The Porcelain Enamel Institute (PEI) has developed a rating system that assesses the wear resistance and durability for wall and floor tiles. Not all tiles are able to be used in all areas, which is why this is important. The wear resistance measure equates to the PEI rating. The rating ranges from 1 to 5, classifying the tiles according to their suitability to be used on different levels of foot traffic.



1. PEI 1= Light Residential
2. PEI 2= Heavy Residential
3. PEI 3= Light Commercial
4. PEI 4= Heavy Commercial
5. PEI 5= Extra Heavy Traffic



Depending on your personal use, the range must be selected. Do ask the dealer for assistance.

### How can I best look after my tiled floor?

Ceramic Tiles are quite simple to take care of, as they don't require too much aftercare cleaning or maintenance. On a regular basis, use **ACECLEAN Cleaning** liquid with warm water and a mop. Refrain from using harsh bleachers or abrasive chemicals as you may damage the tiles.

We also recommend **ACECLEAN Cleaners** for regular maintenance of your porcelain and even natural tile and stone. These special cleaner is specifically designed for regular cleaning of floor and wall tiles to remove general dirt in residential areas. With regular use the appearance of your tiles and stones is enhanced.

### How can I minimize the wear and tear of my floor tiles?

It is natural for tiles to endure wear and tear with age. However to keep your tiled floor and walls looking beautiful, follow some simple tips;

- Avoid using abrasive tools or steel wool on your tiles.
- Use the recommended cleaning products and sealant specific to the tiles purchased.
- Avoid using harsh bleachers and chemicals
- Immediately after any spills, mop the floor with warm water and cleaning product.
- Use floor protectors on the legs of harsh furniture that may scratch or chip the tiles.

Tiles add beauty to your house. Hence take care of them and increase their life span.

by \*PD

## ACECLEAN - GENERAL PURPOSE CLEANER

ACECLEAN General Purpose Cleaner is a fast acting, non-acidic concentrated wall and floor cleaners that can be used for daily maintenance of floorings made with tile and stones. The special formulation of this cleaner made it neutral pH and is most suitable for cleaning dust, dirt, grease and stains from tiled surfaces and sanitary items. When dry, the surface is left hygienically clean.

### Features and Benefits:

- Antibacterial, fast acting
- Non acidic, environment friendly
- Easy to use, low odour
- Provides hygienically clean surroundings

### Application:

Interior and exterior applications for floor and walls, kitchens and bathrooms

### Suitable substrates

- Ceramic, vitrified tiles, granite and marbles, sanitary wares, etc

**Pack size:** Available in 500 ml, 1 liter and 5 liter

**Coverage:** Approximately 50 to 800 sft per liter. Coverage may vary depending on the nature of surface and application method.

**Shelf life:** 12 months, if stored in cool and dry area in unopened container

**Note:** Refer TDS or visit [www.acebond.in](http://www.acebond.in) for more information

**Sample Testing:** It is recommended to perform small testing on actual surface to make sure the product is not harming the surface.



## ACECLEAN - HEAVY DUTY TILE CLEANER

ACECLEAN Heavy Duty Tile Cleaner is a heavy duty, powerful acid based cleaner, used to remove strong haziness of cementitious grout, adhesives and other hard water deposit from tile surface. It is a highly effective water dilutable cleaner that can be diluted with water to desired proportion before cleaning of the surface.

### Features and Benefits:

- Concentrated, fast acting
- Can be diluted with water to desired ratio
- Easy to use, reduced odour
- Provides clean surroundings
- Effective against efflorescence and cement haze

### Uses:

- Interior and exteriors, floors and walls, kitchens and batch rooms, heavy trafficked areas, etc

### Suitable substrates

- Ceramic, vitrified tiles and not for acid sensitive surfaces.

**Pack size:** 1 litre, 5 litre and 20 litre

**Coverage:** Approximately 25 to 150sft per ltr.

**Sample Testing:** It is recommended to perform small testing on actual surface to make sure the product is not harming the surface.



## ACECLEAN - ROUTINE TILE CLEANER

ACECLEAN Routine Tile Cleaner is a fast acting mild acid based cleaner, used to remove cementitious grout, adhesive haze and other hard water deposit from the surface. It is a highly effective cleaner designed for everyday maintenance of tile and stone. It is much safer and less reactive to human body.

### Features and Benefits:

- Economical, fast acting
- Easy to use, reduced odour
- Provides clean surroundings
- Effective against efflorescence and cement haze

### Application:

- Interior and exteriors, floors and walls, kitchens and batch rooms, heavy trafficked areas, etc

### Suitable substrates

- Ceramic, vitrified tiles and not for acid sensitive surfaces

**Pack size:** Available in 1 liter, 5 liter and 20 liter

**Coverage:** Approximately 25 to 150sft per liter.

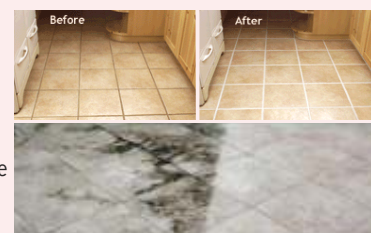
**Sample Testing:** It is recommended to perform small testing on actual surface to make sure the product is not harming the surface.

**Note:** Repeated acid washing may harm glossiness of the surface.

Do not use ACECLEAN Routine Tile Cleaner on acid sensitive stones such as polished marble, travertine, limestone, etc.

**Shelf life:** 12 months, if stored in cool and dry area in unopened container

**Note:** Refer TDS or visit [www.acebond.in](http://www.acebond.in) for more information



surface to make sure the product is not harming the surface.

**Note:** Repeated acid washing may harm glossiness of the surface

•Do not use ACECLEAN Heavy Duty Tile Cleaner on acid sensitive stones such as polished marble, travertine, limestone, etc.

**Shelf Life:** 12 months, if stored in cool and dry area in unopened container

## QUOTE OF THE MONTH

“In matters of style, swim with the current; in matters of principle, stand like a rock.”

-Thomas Jefferson.

## ACECLEAN - TOILET & CERAMIC CLEANER

ACECLEAN Toilet and Ceramic cleaner is a fast acting, acid based, highly effective cleaner, used for daily maintenance cleaning of toilets, basins, ceramics, cementitious grout, adhesive haze and other stains from the surface. It is much safer and less reactive. This unique products removes stubborn water marks and hard scaling which develops due to hardness of water.

### Features and Benefits:

- Fast acting, daily maintenance cleaner
- Easy to use, reduced odour
- Provides clean surroundings
- Effective against hard water deposits, efflorescence and cement haze



### Application

- Interior and exteriors, toilets and basins, floors and walls, kitchens and bath rooms, heavy trafficked areas, etc

**Pack size:** Available in 1 liter, 5 liter and 20 liters

**Coverage:** Approximately 25 to 150sqft per liter

**Sample Testing:** It is recommended to perform small testing on actual surface to make sure the product is not harming the surface.

### Note:

- Repeated acid washing may harm glossiness of the surface.
- Do not use ACECLEAN Toilet and Ceramic Cleaner on acid sensitive stones such as polished marble, travertine, limestone, etc.

**Shelf Life:** 12 months, if stored in cool and dry area in unopened container

**Note:** Refer TDS or visit [www.acebond.in](http://www.acebond.in) for more information.

With your support we are growing  
and this growth is very steady.

This would not be possible without  
your unconditional support and  
constant encouragement.

We cherish your partnership with us.

-ACECRETIONS

## ACE COLUMN

## WORKPLACE CAMARADERIE

by \*Preethi K D'Souza

We work in our work places for nearly 50 hours a week. We spend a lot of time there and a major portion of our life we converse and bind with our colleagues. Then is it not the most important thing that we spend our time together- do work and have pleasure too ie. work with pleasure and fun around. Yes! Let there be fun at the workplace and this environment of fun, frolic and togetherness is called workplace camaraderie.

*"A great place to work is one in which you trust the people you work for, have pride in what you do, and enjoy the people you work with."*

— Robert Levering, Co-Founder, Great Place to Work.

Great workplaces are built through the day-to-day relationships that employees experience - not with a mere checklist of programs and benefits. The key factor that is common in these relationships is TRUST. From the Employee's perspective, a great workplace is one where they:

TRUST the people they work for;

Have PRIDE in what they do; and

ENJOY the people they work with.

Trust is the defining principle of great workplaces. They are created through management's credibility, the respect with which employees feel they are treated, and the extent to which employees expect to be treated fairly. The degree of pride and levels of authentic connection and camaraderie employees feel with one are additional essential components.

From the Manager's perspective, a great workplace is one where they:

Achieve organisational objectives;

Work with employees who give their personal best; and

Work together as a team / family in an environment of TRUST

Great workplaces achieve organisational goals by inspiring, speaking and listening. They have employees who give their personal best by thanking, developing and caring. They work together as a team/family by hiring, celebrating and sharing.

When the term sharing is heard we feel close to the person with whom we share our thoughts, problems and feelings. This sharing only creates an environment of trust and bonding. So let's share at our workplace and create an environment which is filled with laughter and fun. We are not here to make FUN of one another or play pranks but only have fun which will create a lighter mood and a jovial environment at the work place. We can have fun at the workplace by sharing decent jokes and by uplifting the mood of a fellow colleague. This helps us to bond better. There is no another joy when your colleague with whom you spend your day working is your best buddy too. You can share and work pressure is reduced to the minimum. So let's join hands and make our workplace where in we add joy and laughter and make our offices a better place to live in.



## NEWS DESK

### ACEBOND CRICKET TEAM



Work is our manthra, still we play to bond better, we Acecretions Participated in the cricket tournament held at Koteswar, Kundapur.

### OUR VENTURING IN TO NEW MARKET



We have now started our operations in Kerala & Tamilnadu.

Feel free to give your views, feed back, ideas and opinions related to this field. You may be the next face in our news letter.

To,

Book-Post

If Undelivered, please return to:

**Acecrete Adhesions India Private Limited**

2nd Floor, Pulamar House, Church Road, Bejai, Mangalore - 575 004

Ph : +91 824 - 2219917 www.acebond.in E-mail: acetimesnewsletter@gmail.com

Contact us:

**Bangalore** : +91 963 279 3377  
**Mysore** : +91 963 278 3377  
**Pune** : +91 937 190 1177  
**Shimoga** : +91 934 170 4477  
**Mangalore** : +91 963 263 2277

**Hubli** : +91 963 274 3377  
**Udupi** : +91 934 340 4477  
**Bellary** : +91 963 251 2277  
**Belgaum** : +91 963 275 3377  
**Chennai** : +91 934 443 4477

**Hassan** : +91 934 370 4477  
**Goa** : +91 937 252 3377  
**Kerala** : +91 934 982 3377  
**Rest of Maharashtra** : +91 937 170 1177

#### Our Vision

We aspire to be a world class organisation with advanced products, processes, unmatched performance and quality. We are committed to delight our stakeholders with unlimited solutions at our single hub-'ACECRETE'

#### Our Mission

To innovate continuously and provide unique solutions in construction technology.

●Tile Adhesives ●Tile Grouts ●Plasters ●Screeds ●Admixtures ●Waterproofing ●Sealers ●Industrial Cleaners ●Coatings ●Self Leveling  
Interior | Exterior | Wall | Floor | Facade | Submerged Applications

Disclaimer :The information and recommendations contained herein are based upon data believed to be correct; however, no guarantee or warranty of any kind expressed or implied is made with respect to the information provided since conditions of use, method of application and surface preparation at site are beyond our control. The information is given in good faith and meant to serve only as general guidelines during application. Users are advised to carry out tests and take trials to ensure on the suitability of the products meeting their requirements prior to full scale usage of our products. All legal issues are subject to Mangalore jurisdiction only.