



ACEFIX 9 STAR

Multi purpose, Polymer Modified Tile Adhesive



| | | | |
|----------------------------|------------------------|--------------------|-------------------------------|
| Polymer modified additives | Durability | For tiles on tiles | Low voc |
| Large size tile | For natural stones | Easy to apply | 3-15 mm Application thickness |
| Trowel application | 3-4 mm Low consumption | Perfect adherence | Flexible |

Product Compliance

| <table border="1"> <tr> <th>CLASS</th> <th>CHARACTERISTICS</th> </tr> <tr> <td>C2 TES2</td> <td></td> </tr> <tr> <td colspan="2">EN 12004 STANDARD</td> </tr> </table> | CLASS | CHARACTERISTICS | C2 TES2 | | EN 12004 STANDARD | | <p>IS 15477</p> <p>CM/L-6800114511 TYPE-3(T,S1)</p> | <p>American National Standards Institute ANSI A118.4ET</p> |
|---|-----------------|-----------------|----------------|--|-------------------|--|---|--|
| CLASS | CHARACTERISTICS | | | | | | | |
| C2 TES2 | | | | | | | | |
| EN 12004 STANDARD | | | | | | | | |

PRODUCT DESCRIPTION

It is an excellent quality highly polymer modified thinset adhesive with exceptional flexibility and high bond strength for tiling difficult surfaces such as glass tiles, porcelain, large format natural stones on dry substrates like calcium silicate, gypsum, particle board, etc. With its unique blend of polymers, additives, fine aggregates and premium white or grey cement offers ultimate in bond strength for the most demanding installation requirements for large format tile or stones to most difficult-to-bond substrates.

ADVANTAGES

- › Special grade, excellent bonding
- › Excellent quality, Easy to fix
- › Suitable for both floor and wall, interior and exterior application
- › Excellent handling characteristics through extended open and adjustment time
- › Ideal for glass mosaic and all type of large format tile and stones
- › Outstanding flexibility with high strength for most difficult substrates and tile applications
- › Easy mixing with liquid, nice consistency
- › Very good mechanical property
- › Complies to Indian and International standards
(IS 15477:2019/EN 12004/ANSI A 118.4)

SUITABLE SUBSTRATES

- › Cement floors, concrete bed
- › Masonry
- › Ceramic tiles and stones
- › Plaster
- › For most categories dry wall boards

STORAGE AND HANDLING

Store in cool and dry area in unopened original bag.


EASY MAINTENANCE

Properly installed product requires no special maintenance.

AVAILABLE PACK SIZE

Available in 20 kg & 40 kg bags in grey & white colour.

SHELF LIFE

 if stored in cool and dry area in unopened bag. Shelf life is calculated from the month of manufacturing of the product.

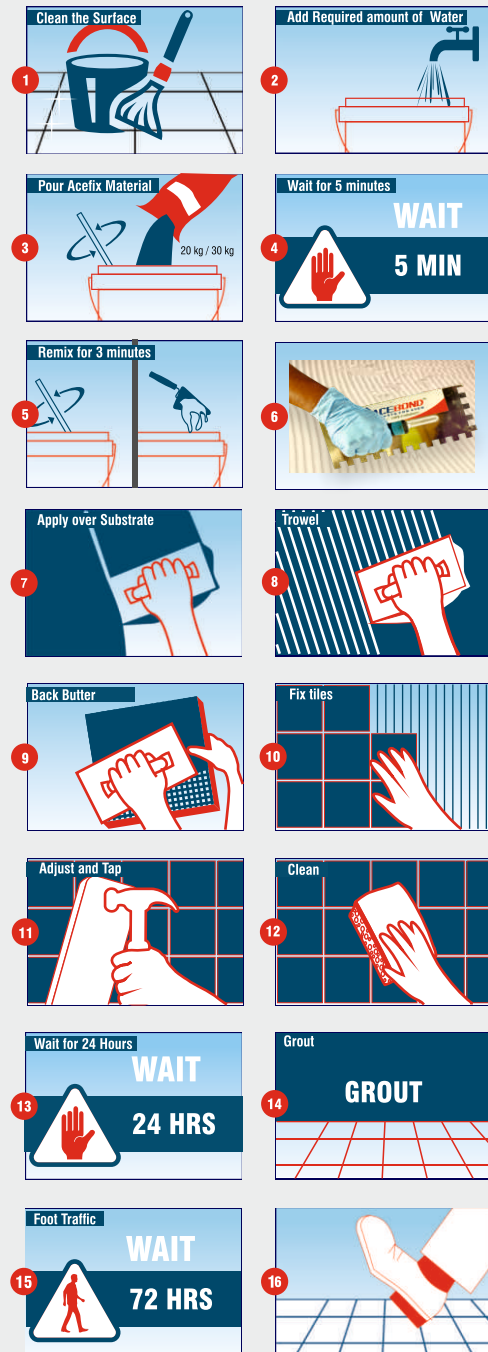
PRODUCT DETAILS

| | |
|--------------------------------|---------------------------|
| Physical state | Powder |
| Colour | Grey & White |
| Bulk Density | 1.45 to 1.50 gm/cc |
| Mix Density | 1.80 to 1.85 gm/cc |
| Mixing Ratio (powder to water) | 3:1 by volume |
| Pot life | Approx 2 hours 30 Minutes |
| Open time | Minimum 30 Minutes |
| Adjustability time | Minimum 30 Minutes |
| Ready for grouting on walls | 24 hours |
| Ready for grouting on floor | 24 hours |
| Ready for use | 48 hours |

APPLICATIONS

- › Interior and exterior applications for floor and wall.
- › For glass tile, large format porcelain, ceramic and all type of natural stones.
- › For facades, tile on tile and submerged application.

METHOD OF INSTALLATION



APPLICATION GUIDANCE

Surfaces must be structurally strong. Remove all grease, oil, dirt, curing compounds, sealers, adhesives or any other contaminant that would prevent good bonding. Glossy or painted surfaces must be sanded, or abraded, and stripped off all contaminants. Concrete or plaster must be cured 28 days prior to bonding unless it is made with Acescreed or Aceplast Premium. Concrete must be free of efflorescence and not subject to hydrostatic pressure. Concrete slabs should have a course finish to enhance the bond. Roughen the surface by sanding or abrading, then rinse and allow to dry. Expansion joints should never be bridged with setting material. Surface temperature should be maintained above 10° C or below 38° C to achieve proper bond. For questions about proper installation, call Technical Services executives on +91963 260 5577.

Use 4.5 – 5 ltr of water for mixing 20 kg powder. Take water in a 20 ltr clean pail and pour powder slowly to the pail under slow mixing. Mix by hand or use a low speed drill mixer (150 – 200 rpm speed) to achieve a smooth, paste-like consistency. Let the homogeneously mixed adhesive mixture slake or stand 5 -10 minutes, stir again and use. Stir occasionally, but do not add more water. When properly mixed, troweled ridges will stand without slump.

Use a required size notch trowel to ensure proper coverage under tiles. Using the flat side of the trowel, apply a skim coat of mortar to the surface. With the help of properly notched or teeth side of the trowel held at a 45° angle, apply additional mortar to the surface, combing in one direction. Press the tile firmly into place in a perpendicular motion across ridges, moving back and forth. The perpendicular motion flattens ridges and closes valleys, allowing maximum coverage. With some tile, back-buttering is advisable. Adjust the tile promptly and beat it in with a beating block and rubber mallet. Periodically pull up a tile and check the back to ensure proper adhesive coverage. If the material has skinned over, recomb with the notch trowel. If too dry, remove and replace the dry material with fresh material. Material in the bucket will remain workable for approximately 3-4 hours.

Grouting can be done after 24 hrs of installation of tiles. Use Acegrout superfine series grout for up to 3mm joints and Acepoxy coarse series grout for up to 12 mm joints. Use Acepoxy Epoxy grout for stain and chemical resistance. Please call customer service executive for more information.

TILE/SUBSTRATE APPLICATION TABLE

| SUBSTRATE TYPE | SUBSTRATES | Ceramic tiles | Terracotta | Ceramic mosaic | Quarry tile | Vitrified tiles | Marble Mosaic | Natural Stone | Porcelain Tiles | Precast terazzo |
|----------------|----------------------------------|---------------|------------|----------------|-------------|-----------------|---------------|---------------|-----------------|-----------------|
| Cementitious | Cement-based screeds and mortars | ✓ | ✓ | ✓ | ✓ | ✓ | ✓ | ✓ | ✓ | ✓ |
| | Cement-based plasters/renders | ✓ | ✓ | ✓ | ✓ | ✓ | ✓ | ✓ | ✓ | ✓ |
| | Existing floor | ✓ | ✓ | ✓ | ✓ | ✓ | ✓ | ✓ | ✓ | ✓ |
| | Concrete Masonry | ✓ | ✓ | ✓ | ✓ | ✓ | ✓ | ✓ | ✓ | ✓ |
| | Cement Terrazzo | ✓ | ✓ | ✓ | ✓ | ✓ | ✓ | ✓ | ✓ | ✓ |
| | Blocks | ✓ | ✓ | ✓ | ✓ | ✓ | ✓ | ✓ | ✓ | ✓ |
| | Self Levelling Screeds | ✓ | ✓ | ✓ | ✓ | ✓ | ✓ | ✓ | ✓ | ✓ |
| Others | Brick Masonry | ✓ | ✓ | ✓ | ✓ | ✓ | ✓ | ✓ | ✓ | ✓ |
| | Ceramic tile | ✓ | ✓ | ✓ | ✓ | ✓ | ✓ | ✓ | ✓ | ✓ |
| | Vitrified tile | ✓ | ✓ | ✓ | ✓ | ✓ | ✓ | ✓ | ✓ | ✓ |
| | Stone | ✓ | ✓ | ✓ | ✓ | ✓ | ✓ | ✓ | ✓ | ✓ |

IS 15477:2019

| Sl. No | Tests/ Parameters | Unit | Results | Requirement | Test Methods |
|--------|--|-------------------|----------------------|-------------------|------------------------|
| 1 | Slip Resistance, mm Test Conditions: At 27±2°C Temperature & 65±5% Relative Humidity | mm | No Slip | ≤0.5mm | IS 15477:2019 |
| 2 | Tensile adhesion strength, Min: a) Dry condition b) Wet condition | N/mm ² | 2.25 2.50 | 1.5 1.0 | IS 15477:2019 (TYPE-3) |
| 3 | Shear adhesion strength, Min: a) Dry condition b) Heat aging condition c) Wet condition | N/mm ² | 4.75 4.55 4.15 | 1.5 1.0 1.0 | IS 15477:2019 (TYPE-3) |

ISO/DIS 13007

| Sl. No | Tests/ Parameters | Unit | Results | Requirement | Test Methods |
|--------|--|-------------------|---------|--|---|
| 1 | Slip Resistance, mm Test Conditions: At 23±2°C Temperature & 50±5% Relative Humidity | mm | No Slip | ≤0.5mm | ISO 13007(PT.1&2)-2010 & Cl-.4.2 |
| 2 | Extended Open time | N/mm ² | 3.09 | > 0.5 N/mm ² after not less than 30 min | EN 1346 (EN 12004) and ISO 13007(PT.2), Cl-4.1 |
| 3 | High tensile adhesion strength | N/mm ² | 9.32 | ≥ 1 N/mm ² | 8.2 of EN 1348:1997(EN 12004) and ISO 13007(PT.2) & Cl-4.4.4.2 |
| 4 | High tensile adhesion strength after water immersion | N/mm ² | 7.51 | ≥ 1 N/mm ² | 8.3 of EN 1348:1997(EN 12004) and ISO 13007(PT.2) & Cl-4.4.4.3 |
| 5 | High tensile adhesion strength after heat ageing | N/mm ² | 7.87 | ≥ 1 N/mm ² | 8.4 of EN 1348:1997(EN 12004) and ISO 13007(PT.2) & Cl-4.4.4.4 |
| 6 | High tensile adhesion strength after freeze-thaw cycles | N/mm ² | 7.66 | ≥ 1 N/mm ² | 8.5 of EN 1348:1997(EN 12004) and ISO 13007(PT.2) & Cl-4.4.4.5 |

EN 12004

| Sl. No | Tests/ Parameters | Unit | Results | Requirement | Test Methods |
|--------|--|-------------------|---------|--|---|
| 1 | Extended Open time | N/mm ² | 3.09 | > 0.5 N/mm ² after not less than 30 min | EN 1346 (EN 12004) and ISO 13007(PT.2), Cl-4.1 |
| 2 | High tensile adhesion strength | N/mm ² | 9.32 | ≥ 1 N/mm ² | 8.2 of EN 1348:1997(EN 12004) and ISO 13007(PT.2) & Cl-4.4.4.2 |
| 3 | High tensile adhesion strength after water immersion | N/mm ² | 7.51 | ≥ 1 N/mm ² | 8.3 of EN 1348:1997(EN 12004) and ISO 13007(PT.2) & Cl-4.4.4.3 |
| 4 | High tensile adhesion strength after heat ageing | N/mm ² | 7.87 | ≥ 1 N/mm ² | 8.4 of EN 1348:1997(EN 12004) and ISO 13007(PT.2) & Cl-4.4.4.4 |
| 5 | High tensile adhesion strength after freeze-thaw cycles | N/mm ² | 7.66 | ≥ 1 N/mm ² | 8.5 of EN 1348:1997(EN 12004) and ISO 13007(PT.2) & Cl-4.4.4.5 |

ANSI A 118.4

| Sl. No | Tests/ Parameters | Unit | Results | Requirement | Test Methods |
|--------|---|-------------------|---------|--|--|
| 1 | Extended Open time | N/mm ² | 3.09 | > 0.5 N/mm ² after not less than 30 min | ANSI A 118.4 |
| 2 | High tensile adhesion strength | N/mm ² | 9.32 | ≥ 1 N/mm ² | ANSI A 118.4 |
| 3 | High tensile adhesion strength after water immersion | N/mm ² | 7.51 | ≥ 1 N/mm ² | ANSI A 118.4 |
| 4 | High tensile adhesion strength after heat ageing | N/mm ² | 7.87 | ≥ 1 N/mm ² | ANSI A 118.4 |
| 5 | High tensile adhesion strength after freeze-thaw cycles | N/mm ² | 7.66 | ≥ 1 N/mm ² | 8.5 of EN 1348:1997(EN 12004) and ISO 13007(PT.2) & CI-4.4.4.5 |

MECHANICAL PROPERTIES

| | |
|-------------------------------------|---|
| Mixing ratio | 4.5 to 5 ltr for 20 kg powder |
| Tensile adhesion strength (28 days) | Minimum 350 PSI (2.41N/mm ²) |
| Shear bond strength (28 days) | Minimum 400 PSI (2.75 N/mm ²) |
| Compressive strength (28 days) | Minimum 4500 PSI (31N/mm ²) |
| Duration for light foot traffic | 6 hrs |
| Duration for normal foot traffic | 24 hrs |
| Duration for heavy foot traffic | 72 hrs |
| Duration for grouting | 24 hrs |

Values may change without prior notification and may not reflect immediately on TDS. Values shown in the table depends on laboratory condition and test procedure used. Actual performance may vary at site depending on site condition and method of installation used. Company is not liable if failed to produce mentioned result in the site.

PROTECTION OF JOB SITE

Curing time is affected by ambient, surface temperatures and humidity. Generally, light foot traffic can be allowed in 16 hours at 25°C, normal foot traffic in 24 and heavy foot traffic in 7days after installation.

CAUTION


- Store in cool and dry place.
- High humidity or moisture will affect the product.
- Once bag is opened, then finish it off without keeping for long time.
- This product contains Portland cement and free silica. Avoid eye contact or prolonged contact with skin.
- Wash thoroughly after handling. If eye contact occurs, flush with water for 15 minutes and consult a physician.
- Do not breathe dust; wear PPE whenever necessary.

COVERAGE

Approximately 3 sft per 1 kg for 3 mm bed thickness. Coverage will vary depending on surface undulation and application variances.

| COVERAGE CHART (As a reference, actual may vary depends on site condition) | | |
|--|-----------------------------|-----------------------------|
| TYPE OF TILE | SIZE OF TROWEL NOTCH | APPROX COVERAGE |
| Ceramic Tile | 6mm x 6mm | 2.5 - 3.0 Sq.ft / kg |
| Vitrified Tile | 6mm x 9mm | 1.5 - 2.0 Sq.ft / kg |
| Stones, Large Format Tiles | 12mm x 12mm | 1.0 - 1.2 Sq.ft / kg |

CUSTOMER SERVICE

For any query related to product availability, cost, coverage, applicators, installation instructions, problems and trouble shooting, contact customer service executive on our  customer help line +91 963 260 5577 or write email to customercare@acebond.in

For product or other information, please write us to info@acebond.in Visit us at www.acebond.in

WARRANTY

Acrete Adhesions India Pvt Ltd warrants to the original purchaser that its product shall be free from defects in material for a period of one year from the manufacturing of the product. Our sole liability under this warranty shall be limited to the replacement of our purchased product if proved defective under normal handling as stated in the TDS. This warranty will not extend to any other product or items which were handled along with our product. This warranty or any other legal issues or claims are subject to Kundapura jurisdiction only.

DECLARATION

The information and recommendations contained herein are based upon data believed to be correct; however, no guarantee or warranty of any kind expressed or implied is made with respect to the information provided since conditions of use, application method and surface preparation at site are beyond our control. All legal issues are subject to Kundapura jurisdiction only.

NB: Technology may change with time necessitating changes to this Technical Data Sheet (TDS). It is the responsibility of the user to ensure that the latest TDS is being used.

ACECRETE ADHESIONS INDIA PRIVATE LIMITED

Manufacturing | Customer care | R & D | Knowledge centre | Application laboratory

Unit-I, D.No.1-27/B, ACEBOND Road, Vakwadi Village & Post, Kundapura Taluk, Udupi District, Karnataka - 576 257 | Unit-II, D.No.1/27(J), ACEBOND Road, Vakwadi Village & Post, Kundapura Taluk, Udupi District, Karnataka - 576 257

info@acebond.in www.acebond.in

24 X 7 CUSTOMER CARE Call: +91 963 260 5577

E-mail : customercare@acebond.in

