

# ACEBOND SUPERFIX

## Slurry Bond Admixture



Creating Innovative  
Green-Chemistry for Sustainable Future



### PRODUCT DESCRIPTION

ACEBOND Superfix is a highly polymer modified, macromolecule based aqueous suspension concentrate to be diluted with water prior to use with portland cement for conventional Wet on Wet method of installing ceramic, vitrified tiles and natural stones using cement slurry made with Superfix solution. It is a self curing, very economical and works as a great enhancer for cement slurry bonding with tiles and stones.

### ADVANTAGES

- › Highly economical to use with many benefits
- › Contains special polymers for self curing of cement slurry
- › It has better performance compared to traditional system of only cement slurry tiling
- › Easily dispersible in water
- › High adhesion, more open time and adjustability time

### APPLICATIONS

- › Interior and Exterior application
- › Suitable for fixing ceramic, vitrified & natural stones for floor installation
- › Suitable for concrete, plastered & mortar beds
- › Suitable for residential & commercial applications

### SUITABLE SUBSTRATES

Traditional Wet on Wet system - Cement mortar beds

### STORAGE AND HANDLING

Store in cool and dry area in unopened original container.

### EASY MAINTENANCE

Properly installed product requires no special maintenance.

### AVAILABLE PACK SIZE

Available in 300ml packing in off-white colour.

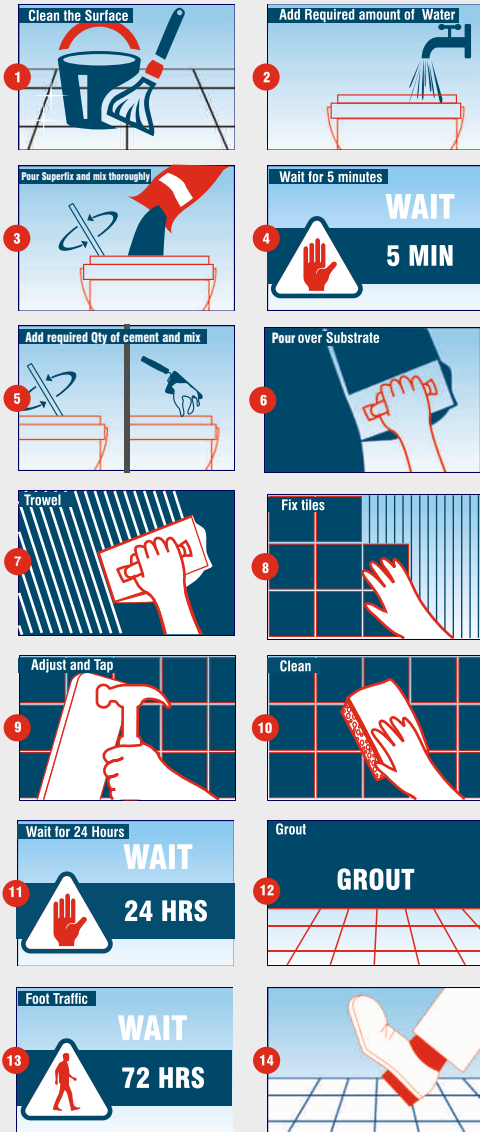


### SHELF LIFE



if stored in cool and dry area in unopened container. Shelf life is calculated from the month of manufacturing of the product.

### METHOD OF INSTALLATION



### APPLICATION GUIDANCE

Surfaces must be structurally strong. Remove all grease, oil, dirt, curing compounds, sealers, adhesives or any other contaminant that would prevent good bonding. Glossy or painted surfaces must be sanded or abraded and stripped off all contaminants. Concrete or plaster must be cured 28 days prior to bonding unless it is made with Acescreed Concrete must be free of efflorescence and not subject to hydrostatic pressure. Concrete slabs should have a course finish to enhance the bond. Roughen the surface by sanding or abrading, then rinse and allow to dry. Expansion joints should never be bridged with setting material. Surface temperature should be maintained above 10°C or below 38°C to achieve proper bonding. For questions about proper installation, call Technical Services executives on +91963 260 5577.

**Note: Shake the container well before using ACEBOND Superfix.**

Take clear & potable water in a clean pail. Add ACEBOND Superfix and mix thoroughly.

**SUPERFIX SLURRY :** Mix 300ml of Superfix with 20 Liters of water. Add this Superfix slurry to cement and mix by hand or with a slow speed mixer to a smooth, workable consistency. Adjust water for consistency if necessary to a maximum of 30 Liters for 300ml of Superfix. Remix and apply with tools over the leveling bed.

#### Installation of Tile or Stone over the Leveling Bed:

Apply Superfix slurry to the substrate with the flat side of the trowel, pressing firmly to work into surface.

Spread as much Superfix slurry as can be covered with tile in 10 minutes. Back butter large tiles (> 12"x12") with Superfix slurry to provide full bedding and firm support. Place tiles into wet, sticky Superfix slurry base and beat in using a beating block and rubber mallet to imbed tile and adjust level.

Note: Higher dosage of ACEBOND Superfix would enhance further, the performance of cement slurry.

#### Grouting :

Grouting can be done after 24 hrs of installation of tiles. Use Acegrout superfine series grout for up to 3mm joints and Acepoxy coarse series grout for 3-12 mm joints. Use Acepoxy Epoxy grout for stain and chemical resistance. Please call customer service executive for more information.

### TECHNICAL DATA

When mixed with water and used with cement as slurry: (Proportion: Cement: Water: Superfix = 50 Kg: 20Ltrs: 300ml.)

Parameter	Traditional slurry method	Superfix slurry method
Bond strength	0.25 to 0.50 MPa	0.6 to 0.9 MPa
Water Absorption	High	Low
Water segregation	Yes	No
Water curing	Required	Not required

Specifications subject to change without notification. Results shown are typical but reflect test procedures used. Actual field performance will depend on installation methods and site conditions.

### PROTECTION OF JOB SITE

Curing time is affected by ambient, surface temperatures and humidity. Generally, light foot traffic can be allowed in 16 hours at 25°C, normal foot traffic in 24 and heavy foot traffic in 7days after installation.

### CAUTION

- Store in cool and dry place.
- High humidity or moisture or high temperature will affect the product.
- Wash thoroughly after handling. If eye contact occurs, flush with water for 15 minutes and consult a physician.
- Do not breathe dust; wear PPE whenever necessary.

### CLEANING

Clean tools and tile work with water

### COVERAGE / DOSAGE

Only 300ml to be mixed in water and used with 50 Kg bag of cement

Coverage will vary depending on thickness of leveling bed and the mix proportion used to make the leveling bed.

### CUSTOMER SERVICE

For any query related to product availability, cost, coverage, applicators, installation instructions, problems and trouble shooting, contact customer service executive on our 24x7 customer help line +91 963 260 5577 or write email to [customercare@acebond.in](mailto:customercare@acebond.in)

For product or other information, please write us to [info@acebond.in](mailto:info@acebond.in) Visit us at [www.acebond.in](http://www.acebond.in)

### WARRANTY

Acecrete Adhesions India Pvt Ltd warrants to the original purchaser that its product shall be free from defects in material for a period of one year from the manufacturing of the product. Our sole liability under this warranty shall be limited to the replacement of our purchased product if proved defective under normal handling as stated in the TDS. This warranty will not extend to any other product or items which were handled along with our product. This warranty or any other legal issues or claims are subject to Kundapura jurisdiction only.

### DECLARATION

The information and recommendations contained herein are based upon data believed to be correct; however, no guarantee or warranty of any kind expressed or implied is made with respect to the information provided since conditions of use, application method and surface preparation at site are beyond our control. All legal issues are subject to Kundapura jurisdiction only.

NB: Technology may change with time necessitating changes to this Technical Data Sheet (TDS). It is the responsibility of the user to ensure that the latest TDS is being used.

### ACECRETE ADHESIONS INDIA PRIVATE LIMITED

Manufacturing | Customer care | R & D | Knowledge centre | Application laboratory

Unit-I, D.No.1-27/B, ACEBOND Road,  
Vakwadi Village & Post, Kundapura Taluk,  
Udupi District, Karnataka - 576 257

Unit-II, D.No.1/27(J), ACEBOND Road,  
Vakwadi Village & Post, Kundapura Taluk,  
Udupi District, Karnataka - 576 257

Info@acebond.in | www.acebond.in

**24 X 7 CUSTOMER CARE Call: +91 963 260 5577**

E-mail : [customercare@acebond.in](mailto:customercare@acebond.in)