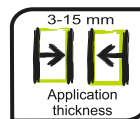


ACESTAR

New Generation Tile Adhesive



Product Compliance



IS 15477



CM/L-6800114511
TYPE - 1 (T)



PRODUCT DESCRIPTION

Polymer based economy adhesive for fixing ceramic tiles and small format vitrified tiles on dry areas of interior applications. Its unique blend of cement, silica, polymers and additives gives excellent bonding between tile and substrates for most demanding installation requirements.

FEATURES/ADVANTAGES

- › Economy grade, cost efficient
- › Superior quality, Easy to fix
- › Single component, just add water
- › Bonds to various substrates
- › Complies with EN / ISO with a C1T classification.
- › Exceeds IS 15477:2019 – Type 1T Adhesive standards.
- › Suitable for fixing upto 2ftx2ft vitrified tiles for floors & 1ftx1ft ceramic tiles for walls.

SUITABLE SUBSTRATES

Concrete, Concrete Masonry, Cement Mortar beds, Cement Plaster, Brick Masonry, Cement Terrazzo

APPLICATION

ACESTAR- New Generation Tile Adhesive is a single-component polymer based economy adhesive ideal for interior applications, particularly for fixing ceramic tiles and small format vitrified tiles on various cement-based substrates. Can be used up to maximum 15 mm bed thickness.

STORAGE AND HANDLING

Store in cool and dry area in unopened original bag.


AVAILABLE PACK SIZE

Available in 20 kg & 40 kg Bags in Grey Colour

EASY MAINTENANCE

Properly installed product requires no special maintenance.

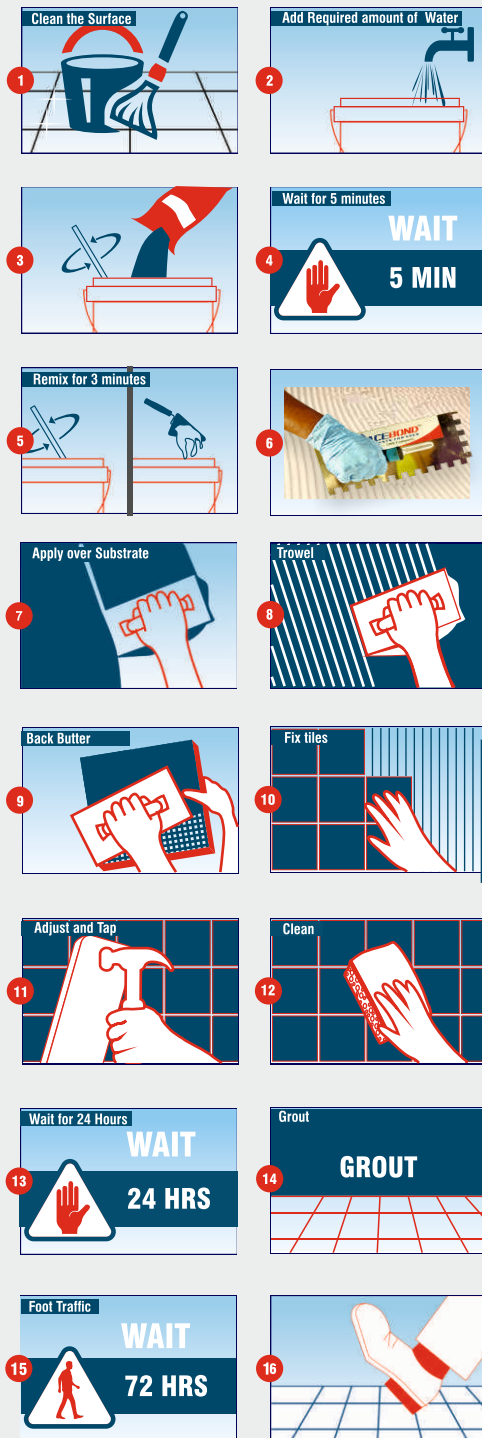
SHELF LIFE

 if stored in cool and dry area in unopened bag. Shelf life is calculated from the month of manufacturing of the product.

PRODUCT DETAILS

Physical state	Powder
Colour	Grey
Bulk Density	1.45 to 1.50 gm/cc
Mix Density	1.80 to 1.85 gm/cc
Mixing Ratio (powder to water)	3:1 by volume
Pot life	Approx. 2 hours
Open time	Minimum 15 Minutes
Adjustability time	Minimum 15 Minutes
Ready for grouting on walls	24 hours
Ready for grouting on floor	24 hours
Ready for use	14 days

METHOD OF INSTALLATION



APPLICATION GUIDANCE

Surfaces must be structurally strong. Remove all grease, oil, dirt, curing compounds, sealers, adhesives or any other contaminant that would prevent good bonding. Glossy or painted surfaces must be sanded, or abraded, and stripped off all contaminants. Concrete or plaster must be cured 28 days prior to bonding unless it is made with Acescreed or Aceplast Premium. Concrete must be free of efflorescence and not subject to hydrostatic pressure. Concrete slabs should have a course finish to enhance the bond. Roughen the surface by sanding or abrading, then rinse and allow to dry. Expansion joints should never be bridged with setting material. Surface temperature should be maintained above 10° C or below 38° C to achieve proper bond. For questions about proper installation, call Technical Services executives on +91963 260 5577.

Use 4.5 – 5 ltr of water for 20 kg powder. Take water in a 20 ltr clean pail and pour powder slowly to the pail under slow mixing. Mix by hand or use a low speed drill mixer (150 – 200 rpm speed) to achieve a smooth, paste-like consistency. Let the homogeneously mixed adhesive mixture slake or stand 5 -10 minutes, stir again and use. Stir occasionally, but do not add more water. When properly mixed, troweled ridges will stand without slump.

Use a required size notch trowel to ensure proper coverage under tiles. Using the flat side of the trowel, apply a skim coat of mortar to the surface. With the help of properly notched or teeth side of the trowel held at a 45° angle, apply additional mortar to the surface, combing in one direction. Press the tile firmly into place in a perpendicular motion across ridges, moving back and forth. The perpendicular motion flattens ridges and closes valleys, allowing maximum coverage. With some tile, back-buttering is advisable. Adjust the tile promptly and beat it in with a beating block and rubber mallet. Periodically pull up a tile and check the back to ensure proper adhesive coverage. If the material has skinned over, recomb with the notch trowel. If too dry, remove and replace the dry material with fresh material. Material in the bucket will remain workable for approximately 3- 4 hours.

Grouting can be done after 24 hrs of installation of tiles. Use Acegrout superfine series grout for up to 5mm joints and Acegrout coarse series grout for 3 - 12 mm joints. Use Acepoxy Epoxy grout for stain and chemical resistance, hygienic grout. Please call customer service executive for more information.

PERFORMANCE PROPERTIES

Applicable Standards:

EN 12004 & ISO 13007:IS 15477 : 2019

EN/ISO Data		
Property: Test Method	Requirement	Typical Values
Open Time: EN 1346	$\geq 0.50 \text{ N/mm}^2$	0.68 – 0.72 N/mm ²
Slip Resistance: EN 1308	$\leq 0.50 \text{ mm}^2$	0.42-0.47 mm ²
Tensile Adhesion Strength		
Initial: EN 1348 – Clause 8.2	$\geq 0.50 \text{ N/mm}^2$	0.55 – 0.60 N/mm ²
After Water Immersion: EN 1348 - Clause 8.3	$\geq 0.50 \text{ N/mm}^2$	0.55 – 0.60 N/mm ²
Heat Ageing: EN 1348 – Clause 8.4	$\geq 0.50 \text{ N/mm}^2$	0.55 – 0.60 N/mm ²
Freeze- Thaw: EN 1348 – Clause 8.5	$\geq 0.50 \text{ N/mm}^2$	0.55 – 0.60 N/mm ²

The adhesive mortar conforms to EN 12004 / ISO 13007 as C1T

IS Data		
Property : Test Method	Requirement	Typical Values
Tensile Adhesion		
Dry Condition – Annex A (Clause 5.1)	Minimum 0.50 N/mm ²	0.60-0.70 N/mm ²
Shear Adhesion		
Dry Condition – Annex B (Clause 5.2)	Minimum 1.00 N/mm ²	1.10-1.25 N/mm ²
Slip Resistance		
Slip Resistance – Annex E (Clause 5.5)	$\leq 0.50 \text{ mm}^2$	0.35-0.45 mm ²

The Adhesive mortar conforms to IS 15477: 2019 - Type 1T Adhesive

ANSI A 118.1 T

Condition	Property	Requirement	Acestar
Glazed tile shear strength	7 days dry	$\geq 450 \text{ PSI (3.1 N/mm}^2\text{)}$	3.15 N/mm ²
	7 days water immersion	$\geq 250 \text{ PSI (1.7 N/mm}^2\text{)}$	1.50 N/mm ²
	28 days heat aging	$\geq 450 \text{ PSI (3.1 N/mm}^2\text{)}$	2.25 N/mm ²
Impervious mosaic (Porcelain) tile shear strength	1 day	$\geq 100 \text{ PSI (0.69 N/mm}^2\text{)}$	1.02 N/mm ²
	7 days dry	$\geq 300 \text{ PSI (2.07 N/mm}^2\text{)}$	1.95 N/mm ²
	28 days dry	$\geq 400 \text{ PSI (2.8 N/mm}^2\text{)}$	2.76 N/mm ²
	7 days water immersion	$\geq 200 \text{ PSI (1.38 N/mm}^2\text{)}$	1.35 N/mm ²
	28 days head aging	$\geq 400 \text{ PSI (2.8 N/mm}^2\text{)}$	3.25 N/mm ²
Quarry tile shear strength	28 days dry	$\geq 150 \text{ PSI (1.03 N/mm}^2\text{)}$	1.10 N/mm ²

TECHNICAL DATA

Mixing ratio	4.5 to 5 ltr for 20 kg powder
Open time	Minimum 15 Minutes
Adjustment time	Minimum 15 Minutes
Pot life	Approx 2 hours
VOC Content	Nil
Duration for light foot traffic	6 hours
Duration for normal foot traffic	24 hours
Duration for heavy foot traffic	72 hours
Duration for grouting	24 hours

Values may change without prior notification and may not reflect immediately on TDS. Values shown in the table depends on laboratory condition and test procedure used. Actual performance may vary at site depending on site condition and method of installation used. Company is not liable if failed to produce mentioned result in the site.

PROTECTION OF JOB SITE

Curing time is affected by ambient, surface temperatures and humidity. Generally, light foot traffic can be allowed in 16 hours at 25°C, normal foot traffic in 24 and heavy foot traffic in 7days after installation.

CAUTION


- Store in cool and dry place.
- High humidity or moisture will affect the product.
- Once bag is opened, then finish it off without keeping for long time.
- This product contains Portland cement and free silica. Avoid eye contact or prolonged contact with skin.
- Wash thoroughly after handling. If eye contact occurs, flush with water for 15 minutes and consult a physician.
- Do not breathe dust; wear PPE whenever necessary.

COVERAGE

Approximately 3 sft per 1 kg for 3 mm bed thickness. Coverage will vary depending on surface undulation and application variances.

COVERAGE CHART (As a reference, actual may vary depends on site condition)		
TYPE OF TILE	SIZE OF TROWEL NOTCH	APPROX COVERAGE
Ceramic Tile	6mm x 6mm	2.5 - 3.0 Sq.ft / kg
Vitrified Tile	6mm x 9mm	1.5 - 2.0 Sq.ft / kg
Stones, Large Format Tiles	12mm x 12mm	1.0 - 1.2 Sq.ft / kg

CUSTOMER SERVICE

For any query related to product availability, cost, coverage, applicators, installation instructions, problems and trouble shooting, contact customer service executive on our  customer help line +91 963 260 5577 or write email to customercare@acebond.in

For product or other information, please write us to info@acebond.in Visit us at www.acebond.in

WARRANTY

Acecrete Adhesions India Pvt Ltd warrants to the original purchaser that its product shall be free from defects in material for a period of one year from the manufacturing of the product. Our sole liability under this warranty shall be limited to the replacement of our purchased product if proved defective under normal handling as stated in the TDS. This warranty will not extend to any other product or items which were handled along with our product. This warranty or any other legal issues or claims are subject to Kundapura jurisdiction only.

DECLARATION

The information and recommendations contained herein are based upon data believed to be correct; however, no guarantee or warranty of any kind expressed or implied is made with respect to the information provided since conditions of use, application method and surface preparation at site are beyond our control. All legal issues are subject to Kundapura jurisdiction only.

NB: Technology may change with time necessitating changes to this Technical Data Sheet (TDS). It is the responsibility of the user to ensure that the latest TDS is being used.

ACECRETE ADHESIONS INDIA PRIVATE LIMITED

Manufacturing | Customer care | R & D | Knowledge centre | Application laboratory

Unit-I, D.No.1-27/B, ACEBOND Road,
Vakwadi Village & Post, Kundapura Taluk,
Udupi District, Karnataka - 576 257

Unit-II, D.No.1/27(J), ACEBOND Road,
Koteshwara (S.O.) - Asodu Post, Vakwadi Village,
Kundapura Taluk, Udupi District, Karnataka - 576 222

24 X 7 CUSTOMER CARE Call: +91 963 260 5577

E-mail : customercare@acebond.in